



Seymours
LET BY

NO PARKING
NO STOPPING

AR

ALEXANDER RUMSEY
REAL ESTATE

Pyle Close, Addlestone, KT15

Offers Over £325,000

🛏️ 2 🚿 1 🚗 1



Situated in the highly sought-after location of Pyle Close in Addlestone, this beautifully presented first floor apartment offers stylish, contemporary living in immaculate condition throughout. Perfect for first-time buyers, downsizers or investors, the property combines generous living space with the rare benefit of access to a private garden.

The heart of the home is the impressive open-plan living/dining room and kitchen, creating a bright and sociable space ideal for both relaxing and entertaining. The modern kitchen is thoughtfully laid out with ample worktop and storage space, seamlessly flowing into the spacious reception area.

There are two well-proportioned bedrooms, both tastefully decorated and offering comfortable accommodation. The contemporary bathroom is finished to a high standard, complementing the apartment's pristine presentation. Additional storage is conveniently located off the hallway.

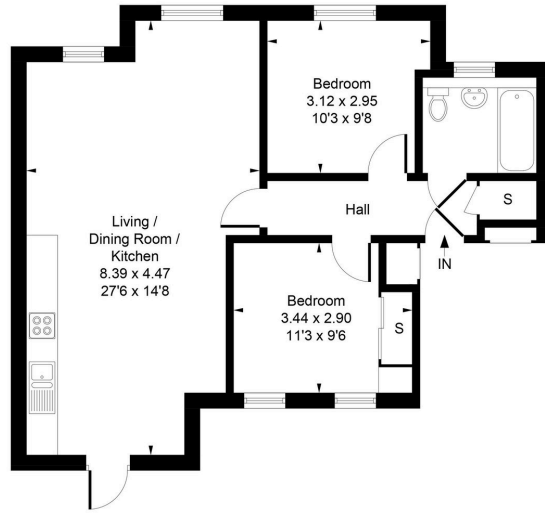
A particular highlight of this property is the access to a private garden - a wonderful outdoor retreat, perfect for summer entertaining, gardening enthusiasts, or simply unwinding in a peaceful setting.

Located within easy reach of local amenities, transport links and green spaces, this exceptional apartment offers a superb balance of style, comfort and convenience.

Early viewing is highly recommended to fully appreciate everything this outstanding home has to offer.



Approximate Gross Internal Area
63.69 sq m / 686 sq ft



Whilst every attempt has been made to ensure the accuracy of the floor plan contained here, measurements of doors, windows, rooms and any other items are approximate and no responsibility is taken for any error, omission, or mis-statement. This plan is for illustrative purposes only and should be used as such by any prospective purchase.

- Allocated parking space included
- Immaculate condition throughout
- Modern, well-equipped kitchen
- Contemporary bathroom suite
- Excellent built-in storage
- Stunning first floor apartment in sought-after Pyle Close, Addlestone
- Bright and spacious open-plan living/dining area
- Two well-proportioned bedrooms
- Generous internal layout
- Access to a private garden



Your Journey, Our Priority

01932 925 050

| sales@arrealstate.co.uk

| www.arrealstate.co.uk