



ALEXANDER RUMSEY

REAL ESTATE



## New Haw Road, New Haw, KT15

Offers Over £350,000

🛏️ 2 🍳 2 🚗 1



This beautifully presented top-floor apartment is truly exceptional, boasting a spacious 963 sq. ft., making it one of the largest in this exclusive small block. Immaculate in every detail, the property is as impressive as it is practical, offering a perfect blend of comfort and style.

The bright and expansive open-plan living area is a standout feature, with ample space for both lounge and dining furniture. It seamlessly flows into a fully fitted kitchen, complete with built-in storage and integrated appliances, creating an ideal setting for modern living.

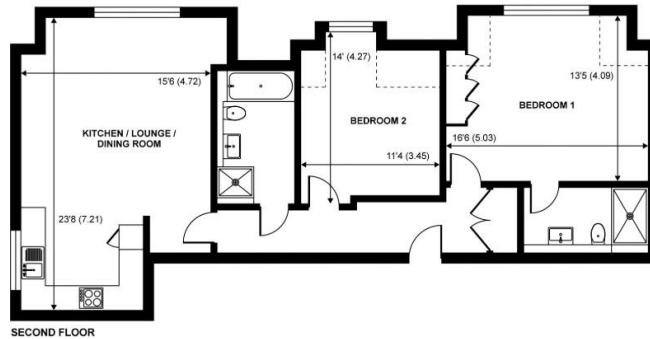
The main bedroom is a serene retreat, featuring built-in wardrobes and a private en-suite shower room. The second double bedroom is equally generous and is serviced by a luxurious four-piece family bathroom, complete with a separate shower and bath.

Set within secure, gated grounds, the property benefits from allocated parking and a secure entry system, providing both convenience and peace of mind. Communal areas are well-maintained, further enhancing the property's appeal.

With no onward purchase, this top-floor gem is ready to welcome its next owner. Offering impressive size, immaculate presentation, and a superb location, it's a rare opportunity not to be missed.



Approximate Area = 918 sq ft / 85.2 sq m  
 Limited Use Area(s) = 45 sq ft / 4.1 sq m  
 Total = 963 sq ft / 89.3 sq m  
 For identification only - Not to scale



- 960 Plus Sqft
- Immaculate Condition Through-out
- No Chain
- Loft Access
- Two Spacious Double Bedrooms
- En-Suite To The Main Bedroom
- Four Piece Family Bathroom
- Impressive Open Plan Kitchen/Lounge
- Gated & Secure Entrance And Allocated Parking
- 244 Years Remaining On Lease

