



Limebush Close, New Haw, Addlestone, KT15 3LW

£235,000

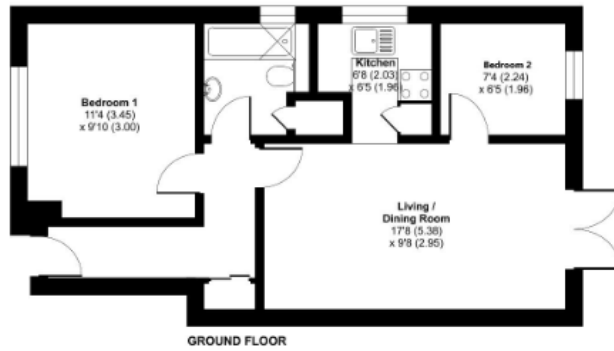
1 1 1



This spacious 1-bedroom ground floor apartment, located at the end of a popular cul-de-sac, offers direct access onto communal gardens. Conveniently close to shops, recreation fields, the Basingstoke Canal, and two mainline train stations, it is uniquely positioned in a very small block as the only unit with French doors opening straight onto the garden. Inside, the apartment features a modern kitchen, a stylish bathroom, a comfortable double bedroom, and a generously sized lounge/diner. This property also benefits from allocated parking.



Approximate Area = 500 sq ft / 46.5 sq m
For identification only - Not to scale



- Ground Floor Maisonette
- Private Entrance
- Direct Access Out Onto Communal Garden
- Generous Double Bedroom
- Allocated Parking Space
- Close Proximity To New Haw High Street & Station
- Double Glazed
- Patio Area
- Perfect For First Time Buyers • No Chain Sale Or Investors

